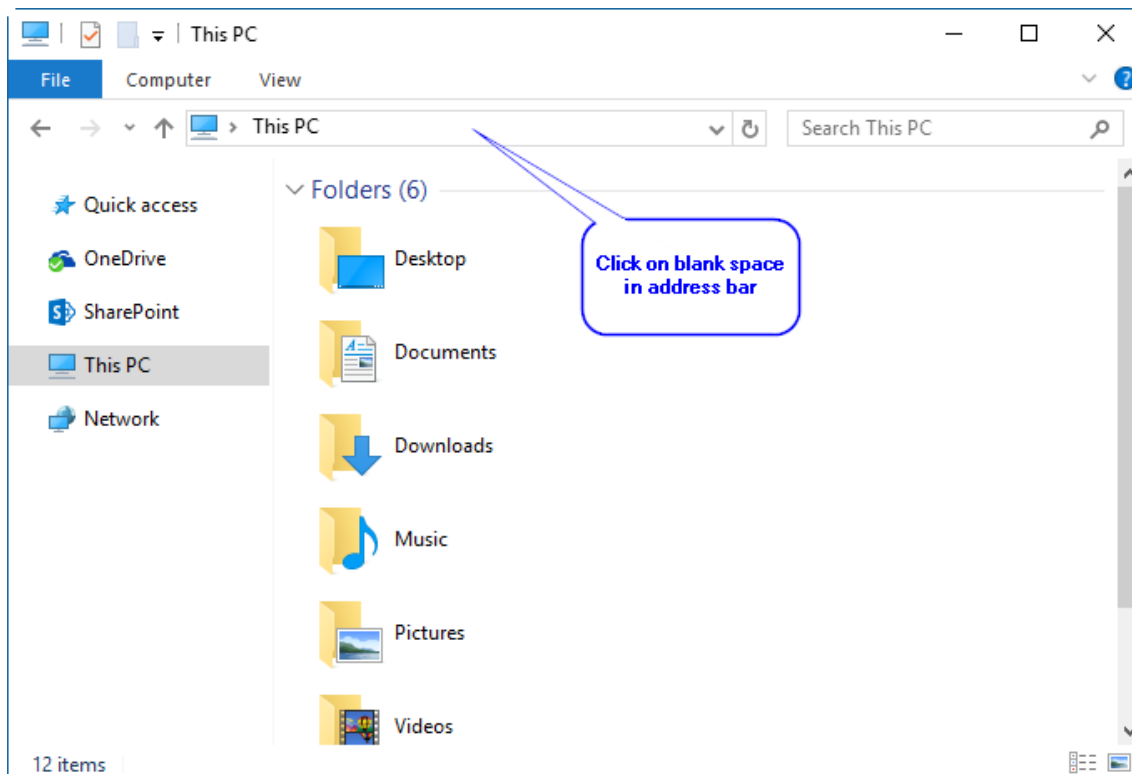
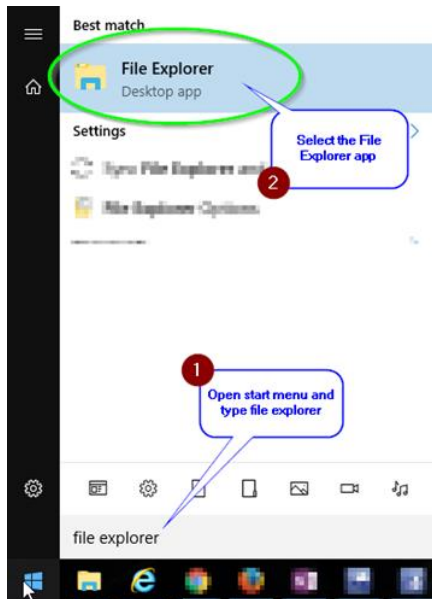


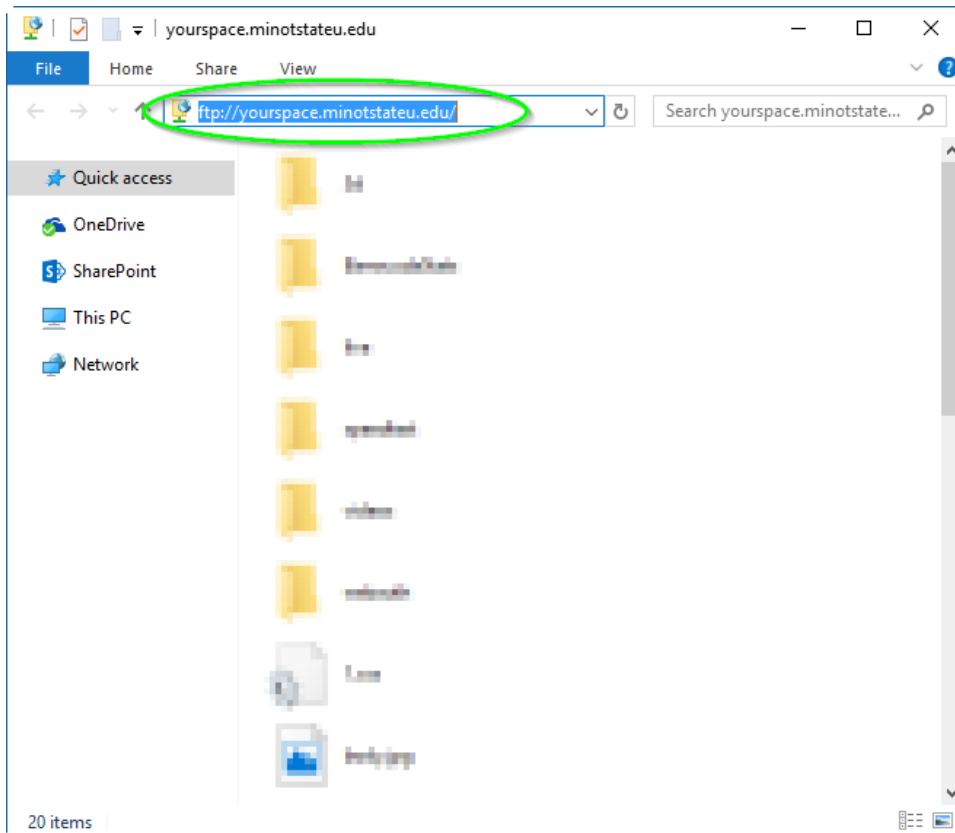
**Open File Explorer (Click the icon on your start menu or search for the app)**



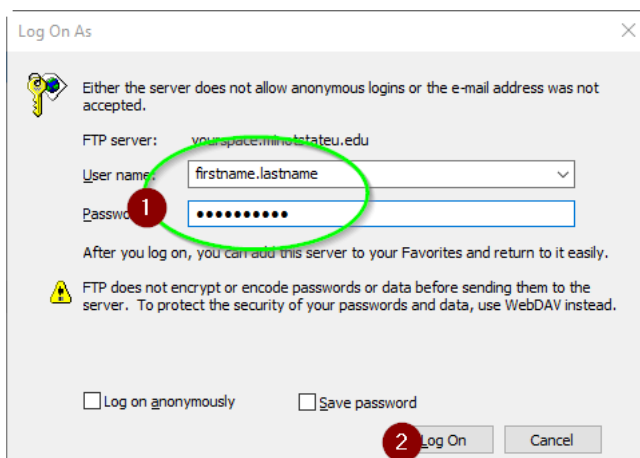
**OR**



Enter <ftp://yourspace.minotstateu.edu> in the address bar



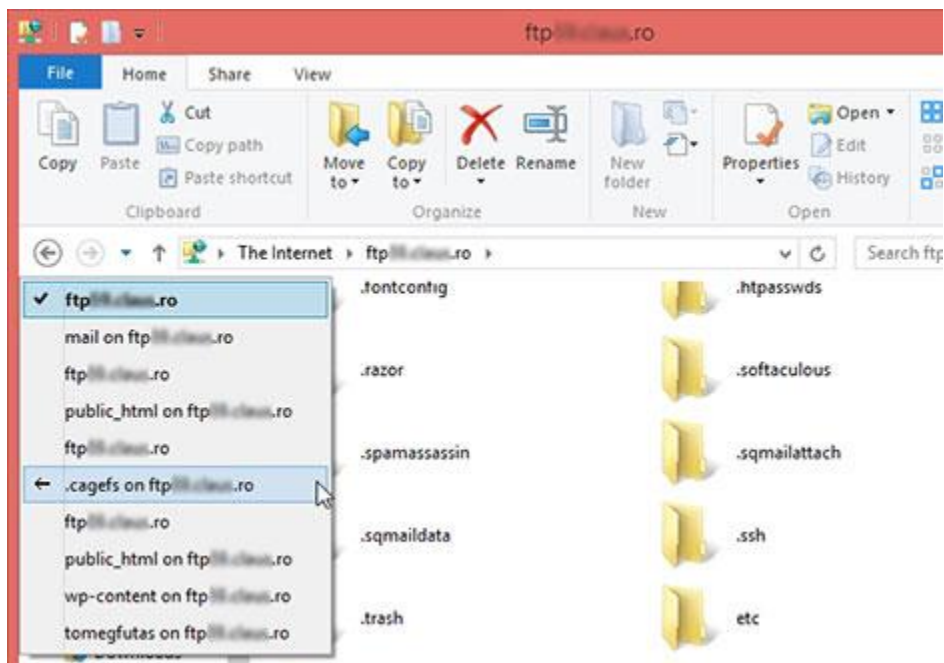
Login using your campus connection credentials:



You can now work on the FTP server as if it was your own computer. Depending on the speed of the connection, while you browse through files and folders, it may take a while for things to be displayed.

One thing you must remember is that, as long as you keep the *Windows/File Explorer* window open, the one in which the connection was established, the FTP connection remains active. To disconnect, simply close that *Windows/File Explorer* window.

You can browse to folders from your computer in a new *Windows/File Explorer* window or in the same window. However, there won't be any shortcut to take you back to the FTP server. To go back to it, you need to click or tap on the small arrow found near the *Back* and *Forward* buttons. There, you'll see a list with all the places you've browsed and you can easily go back to your FTP server, without starting a new connection.



File & folder management operations are done as usual. *Windows/File Explorer* translates all your clicks/taps and keyboard commands into the appropriate FTP commands.

